



GMT MONTHLY MEMBERSHIP PROGRESS REPORT

Results as of: 2/29/2020

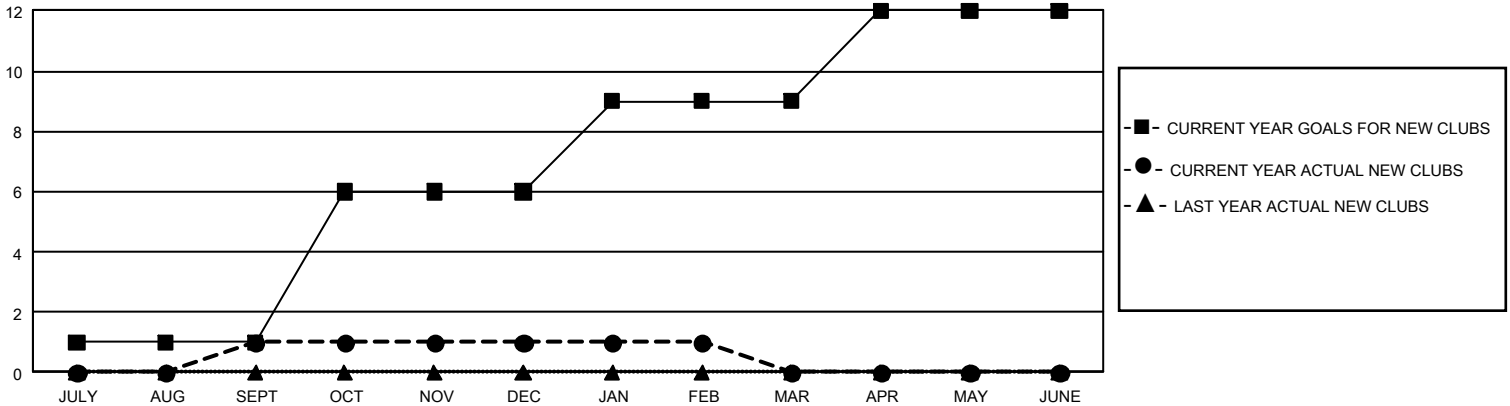
GMT Constitutional Area 5 - J, Group I

GMT: OPEN

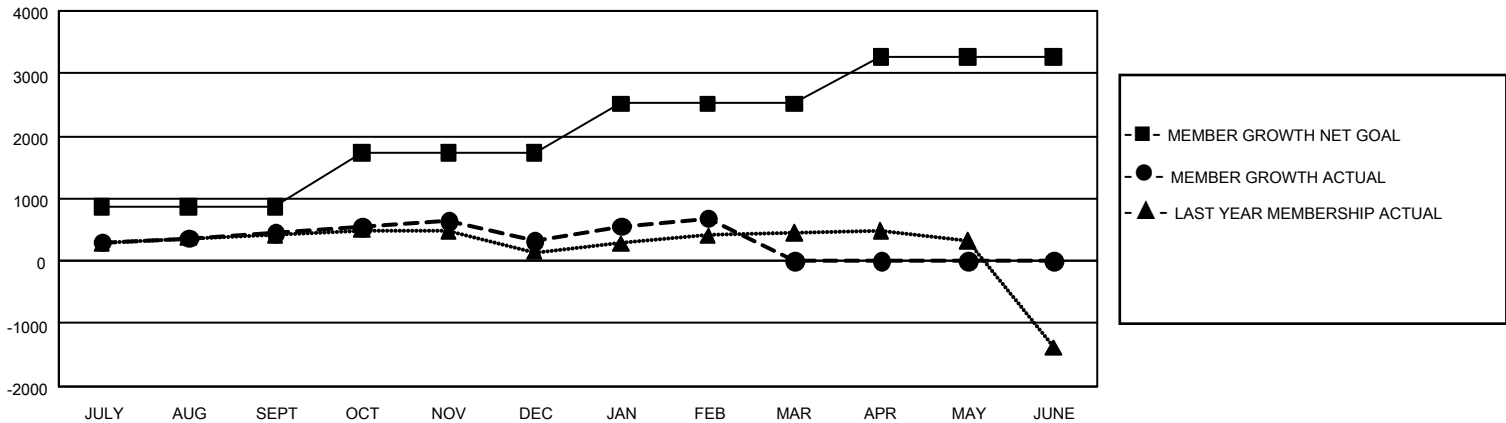
REPORT DOES NOT INCLUDE CLUBS IN UNDISTRICTED AREAS.

Clubs				Members			
RESULTS FOR 2019-2020				RESULTS FOR 2019-2020			
QUARTER	NEW CLUB GOAL	NEW CLUBS	DROPPED CLUBS	QUARTER	MEMBER GROWTH NET GOAL	MEMBER GROWTH ACTUAL	DROPPED MEMBERS ACTUAL (including transfers)
JULY/AUG/SEPT	3	1	2	JULY/AUG/SEPT	2,595	1,034	525
OCT/NOV/DEC	15	0	1	OCT/NOV/DEC	2,598	584	702
JAN/FEB/MAR	9	0	0	JAN/FEB/MAR	2,358	621	252
APR/MAY/JUNE	9	0	0	APR/MAY/JUNE	2,265	0	0

GOALS AND ACTUAL NEW CLUBS CUMULATIVE



GOALS AND ACTUAL MEMBERS CUMULATIVE



DROPPED CLUBS: 3	606 CLUBS OF 816 ADDED 1 OR MORE NEW MEMBERS	<u>GENDER DISTRIBUTION</u> MALE 26,470 (73.32%) FEMALE 9,630 (26.68%)
<u>DROPPED MEMBERS</u> DECEASED 205 CLUB CANCELLED 35 OTHER 1,239 <hr/> TOTAL 1,479	CLICK HERE FOR CUMULATIVE MEMBERSHIP DATA	TOTAL FAMILY UNIT MEMBERS 15,751 FAMILY MEMBERS PAYING HALF DUES 8,523